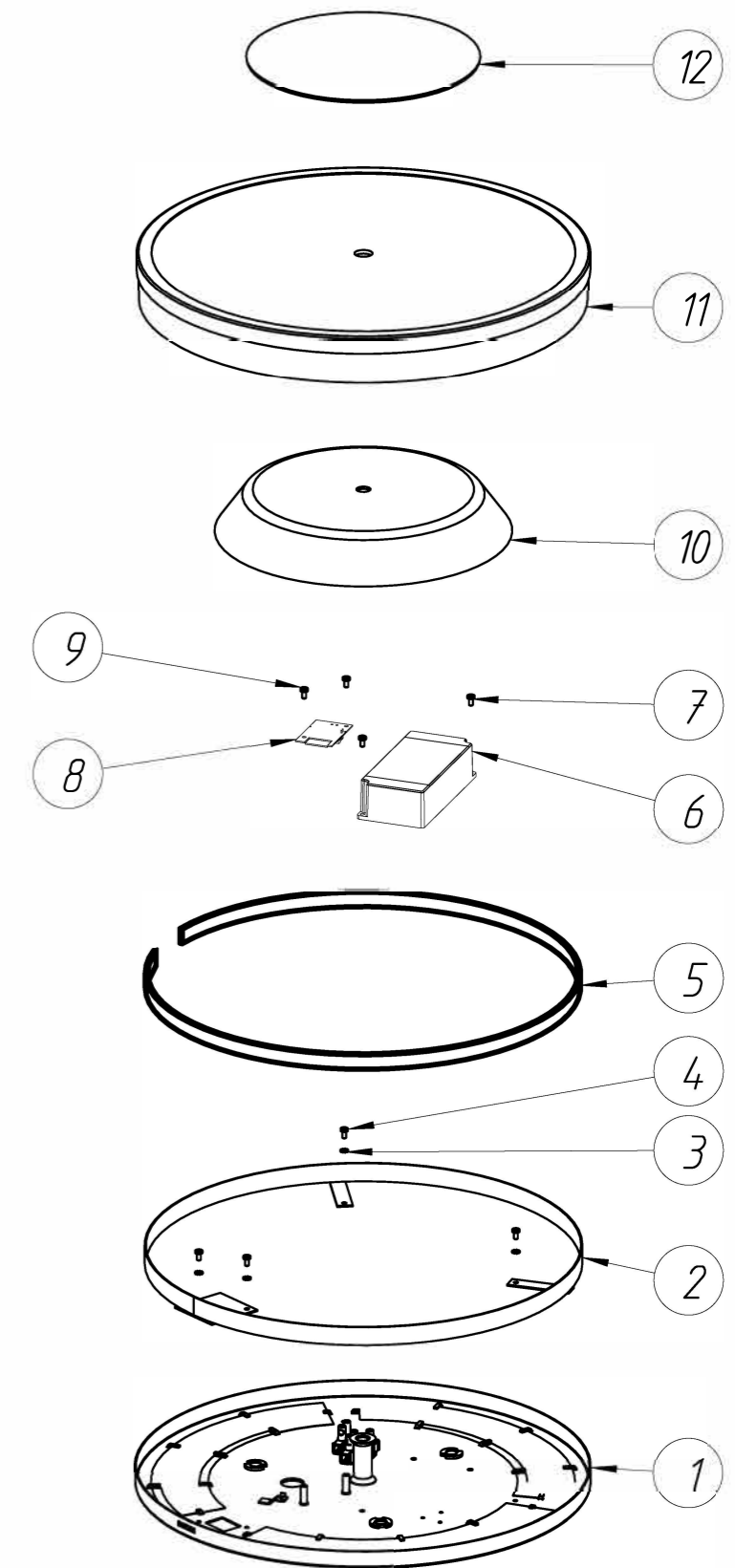


PHILIPS hue

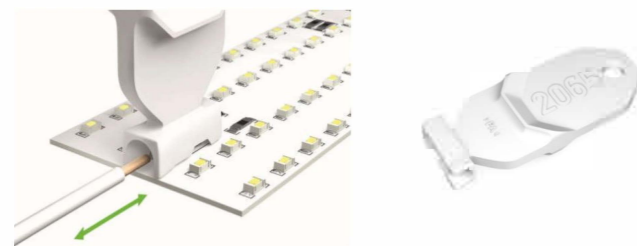
Warnings

Always make sure the luminaire is detached from the mains socket
 Always make sure the DC cable is detached from the power supply
 Staring at the operating light source may cause eye injury

#	Disassemble/dismantle steps	Tools needed
a	Remove the deco plate (12) by turning it counterclockwise.	-
b	Remove the diffuser (11).	-
c	Remove the reflector (10)	-
d	Remove flat cable from the LIGHT SOURCE - LED STRIP [5] and LIGHT SOURCE - HUE CONNECT [8]	-
e	Remove the CONTROL GEAR – PSU (6) from the base (1) by unscrewing screws (7)	TORXHEAD SCREW DRIVER T10
f	Remove low voltage wires of LIGHT SOURCE - HUE CONNECT (8)	FLATHEAD SCREWDRIVER OR WAGO TOOL #2065
g	Remove the LIGHT SOURCE - HUE CONNECT from the base (8) by unscrewing screws (9)	TORXHEAD SCREW DRIVER T10
h	Remove HEAT SINK (2) by unscrewing screws (4).	TORXHEAD SCREW DRIVER T10
i	Remove light strip (5) acc. to instruction: 442295215544_L2 Removal and Test Instruction Flex LED strip	See instruction.



- A specific Wago tool #2065 can be ordered separately for wire insertion and release tool:



SKU	Color	Country
929003055001	WHITE	EU
929003055101	BLACK	EU
929003055201	ALUMINIUM	EU

#	COMPONENT	QTY
1	BASE	1
2	HEAT SINK	1
3	WASHER	3
4	SCREW	3
5	LIGHT SOURCE - LED STRIP	1
6	CONTROL GEAR - PSU	1
7	SCREW	2
8	LIGHT SOURCE - HUE CONNECT	1
9	SCREW	2
10	REFLECTOR	1
11	DIFFUSER	1
12	DECO PLATE	1

STATUS	DESCRIPTION	DESIGN ID	01	2021-07-26
Being ceiling Disassembly instruction				
NAME	He Go	LOCAL PART ID	SH. 2	A3-L
CHECKED	DATE	2021-07-26		

